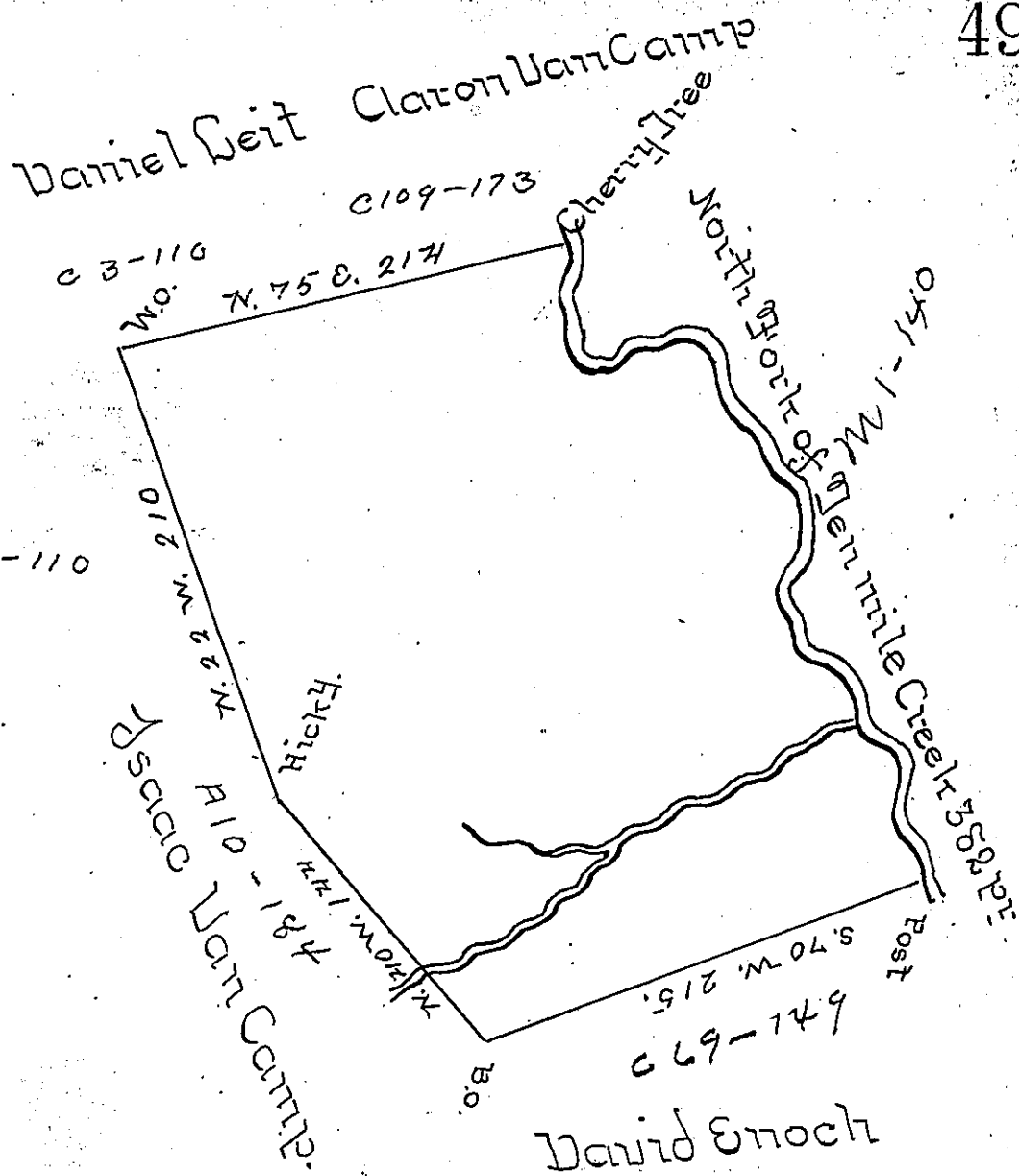


Courses & Dist down
Ten Mile Creek

S 02 77 48 Per	S. 29 E. 17
S. 70 E. 15	S. 45 E. 30
N. 54 E. 15	S. 36 E. 10
S. 87 E. 15	S 02 77 13
S 78 E. 26	S 80 E 11
S 30 E. 10	S 34 E 24
S 02 77 13.	S 6 W 23
S 53 E. 9	S 50 E. 10
E 05 7 9	138
S 16 E. 21	244
S 41 E. 17	382
S 10 W. 33	
S 21 W. 13	
	<u>274</u>



The Above is a draught of a Survey made September 6th 1786 in pursuance of a Warrant granted to Thomas Hill dated Augst 1st 1786 The Land is situate on the North Fork of Ten Mile Creek in Washington County, is called Bottom Rick and contains 400 Acres with Allowance of 6 per Cent for Roads &c.

David Redick U.S.

John Lukens Esq^r Sur^r Gen^l

IN TESTIMONY that the above is a copy of the original remaining on file in the Department of Internal Affairs of Pennsylvania, made conformably to an Act of Assembly approved the 16th day of February, 1833, I have hereunto set my Hand and caused the Seal of said Department to be affixed at Harrisburg, this second day of January 1900.

James W. Latta
Secretary of Internal Affairs.